



# GEO Blue Planet

*Ocean and Coastal  
Observations for Policy and  
Decision Making*

Emily Smail, PhD

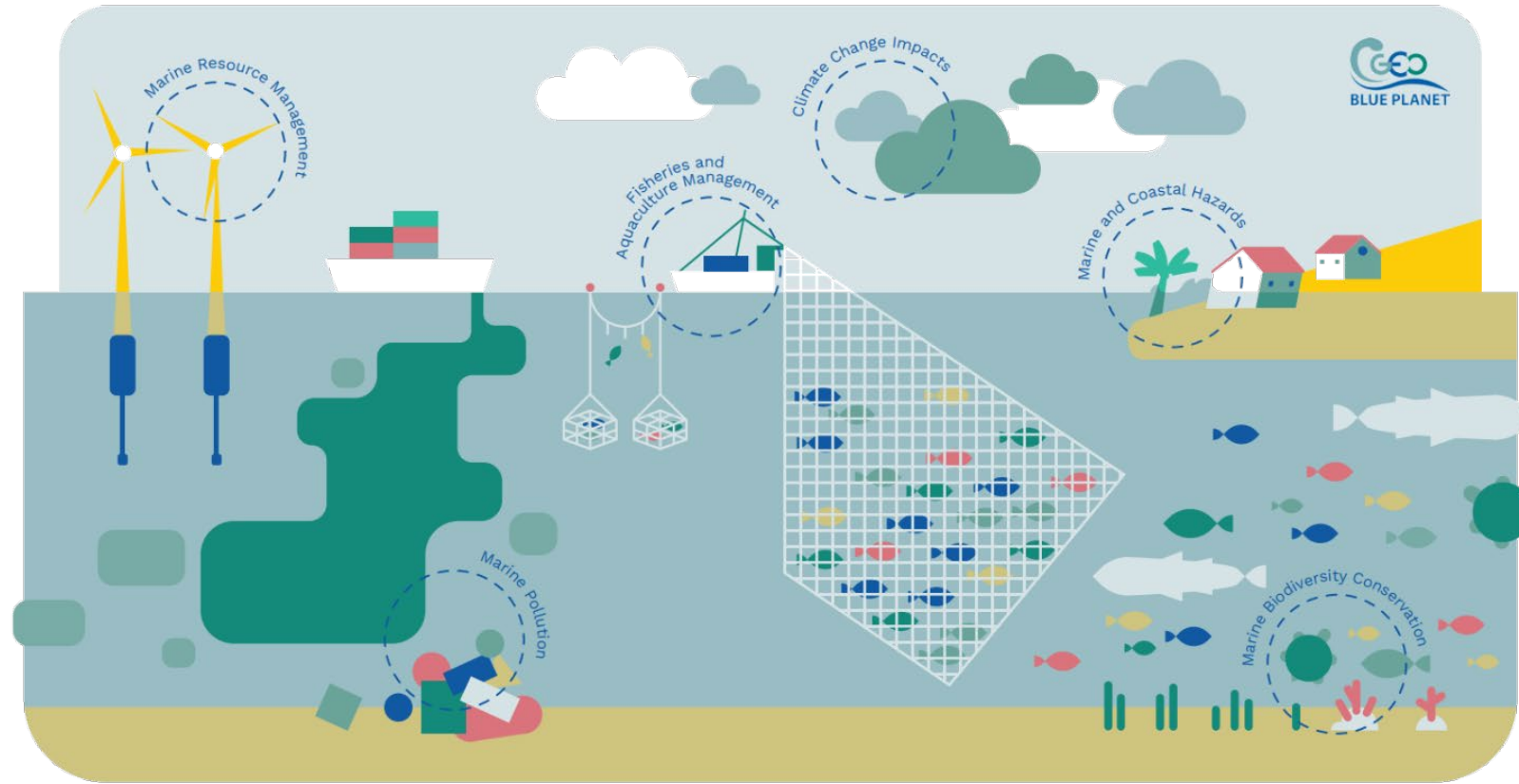
Executive Director, GEO Blue Planet Initiative

NESDIS/STAR/SOCD

University of Maryland



# BRIDGING THE GAP between ocean and coastal observational data and societal needs to deliver actionable information



# Core Action Areas



- Stakeholder Engagement – Knowing what the information needs are
- Cooperation and Co-design – Building tools that meet information needs
- Capacity Development – Strengthening and transferring capabilities

# Core Actions



# Activities



**Marine  
litter**



**Eutrophication**



**Coastline  
changes**



**Fisheries**



**Sargassum**



**Oil  
spill**



**Climate  
adaptation**



**All activities support and contribute to the  
UN Decade of Ocean Science for Sustainable Development**





# Secretariat

- US Office (2015)



- European Office (2020)



Funded by  
the European Union

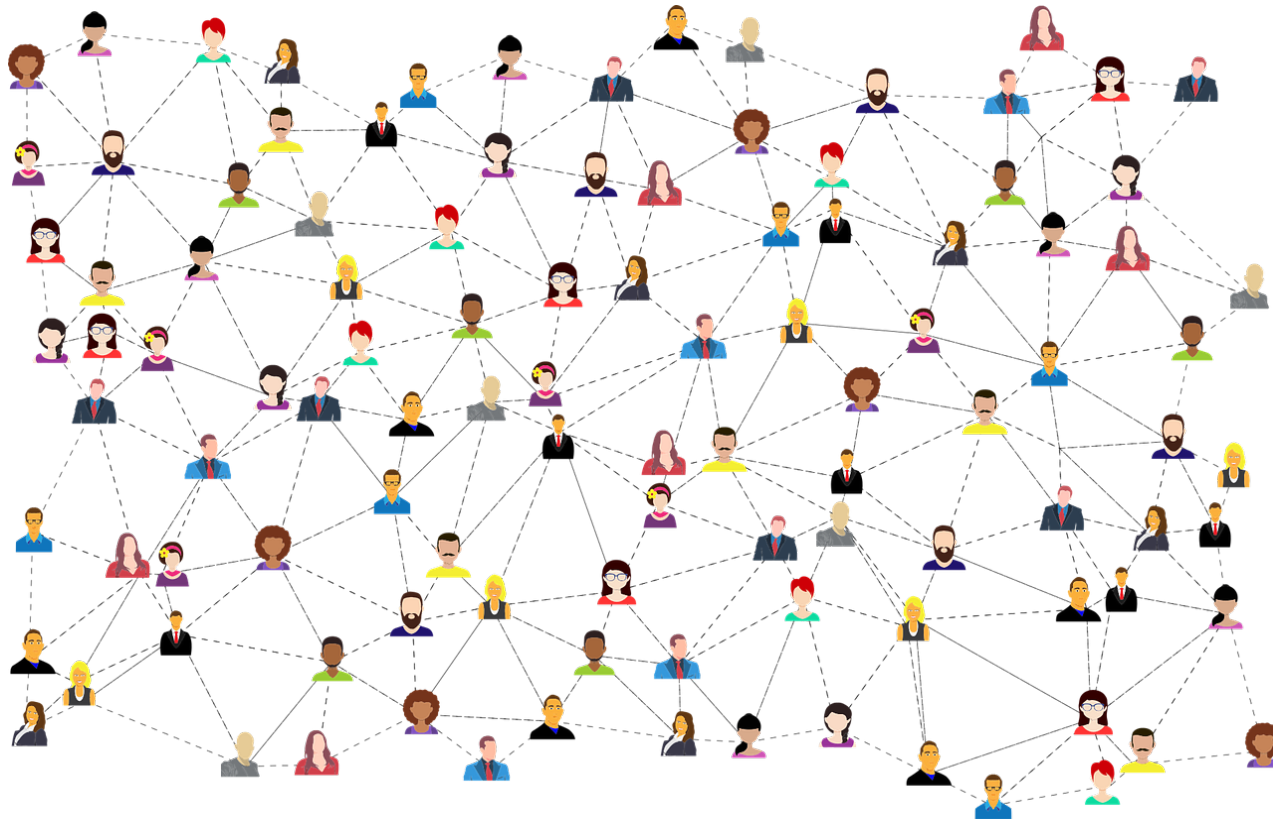


- Asian Office (2022)



한국해양수산개발원  
KOREA MARITIME INSTITUTE

# Global Network – activities implemented by participants



Fiscal sponsorship arrangement

